



CULTIVATING IOWA'S TALENT CONTINUUM

***OCT. 1, 2018 – SEPT. 31, 2019
ANNUAL REPORT***

THANK YOU FOR YOUR SUPPORT – YOUR CONTRIBUTIONS ENSURE A SUCCESSFUL FUTURE FOR OUR STATE

TO OUR PARTNERS,

It is an honor to share the commitment to strengthen and sustain Iowa’s workforce with you.

Your support equips multiple generations with skills, knowledge and resources for the betterment of our state. Though we focus on individuals, our ultimate goal is to enhance Iowa’s talent continuum, ensuring a strong network of great leaders who can bring about positive change in companies and communities across Iowa for years to come.

Our goal is to create more Iowans who are well-informed on issues facing our state. More Iowans who see the value in home-grown opportunities. More Iowans who are motivated to leave their mark on an Iowa company. And more Iowans who are a step ahead because they’ve taken the time to hone their strengths and skills where others have not.

The impact of our programs compounds with each participant, volunteer and donor as they are living proof of the potential and prosperity that can be found and created right here in Iowa.

To carry out our vision, we:

- ▶ **Activate.** Engaging individuals across the state into our network.
Students and professionals, educators and employers, area development ambassadors, officials and legislators
- ▶ **Accelerate.** Expanding educational opportunities with enhanced experiential learning.
Opportunities awareness, firsthand exposure, newfound perspective, civic engagement
- ▶ **Advance.** Empowering Iowans to take charge, include others and grow together.
Pursuing one’s purpose, finding collaborative solutions, caring for each other

On behalf of the ABI Foundation, I would like to extend my sincere gratitude to all who contributed to the success of the 2018-19 programs. We could not provide the exceptional opportunities to individuals across the state each year without your partnership. We know the inspiration you’ve provided has a lasting affect on all our participants.

You are making a difference in the lives of Iowans.

THANK YOU,
Becky Coady
Vice President

OUR MISSION & HISTORY *The Iowa Association of Business and Industry (ABI) Foundation*

The **ABI Foundation** develops our state’s future and current leaders through statewide educational leadership programs: Business Horizons (innovation simulation for high school students), Leadership Iowa University (college internship capstone) and Leadership Iowa (professional immersion).

- ▶ In 1982, **Leadership Iowa** was created in response to a comprehensive study of the state indicating the interest and need for personal and professional development experiences.

At the time, there were only three other statewide leadership development programs in the country. Coincidentally, this was the same year several locally-focused leadership development programs were launched in Iowa, including those in Des Moines and Cedar Rapids. Leadership Iowa offers insight into a multitude of innovative Iowa communities’ problems and best practices.

The comprehensive program examines the opportunities and challenges facing our state to inspire a network of knowledgeable problem solvers to take action and improve companies and communities.

“Leadership Iowa provides participants with a bird’s-eye view of the state of Iowa,” said Barb Baker of Grinnell Mutual, 2018-19 Chair of Leadership Iowa. “Participants from across Iowa are immersed in top-to-bottom, corner-to-corner Iowa issues and challenged to make our state better through leadership, partnerships, personal growth and development.”

- ▶ In 1984, the U.S. Chamber of Commerce published a report that included the notion that ‘high school students do not understand the role of business in a thriving economy.’ That year, **Business Horizons** was implemented by Iowa leaders.

Since then, the program has adapted to complement evolving school curriculum and support emerging workforce needs. Despite the increasing accessibility to quality career pathways and the availability of well-paying jobs, currently one third of Iowa high school graduates do not pursue further education to meet the current workforce needs.

The collaborative program joins students of different experience levels and future pathways together to work efficiently and effectively on the common goal of launching their mock business and competing in real-world business challenges.

“Business Horizons is an opportunity for students to affirm what they’re interested in and also give them an idea of a different way they can apply their strengths to a career,” said Ami Burns of Vermeer Corporation, 2018-19 Chair of Business Horizons. “Many come planning to leave Iowa, but after the program they have an idea of the possibilities that feel like the right fit for them, right here in the state again.”

- ▶ In 2008, in response to the reporting on the ‘brain drain’ during the recession, **Leadership Iowa University** was assembled to exemplify the value of our college graduates to the state.

In recent years, the program has been utilized as a college internship capstone for companies to develop their potential future employees. Students bridge college and career with a better understanding of what their work and businesses do for the state.

Less than half of Iowa college students are likely to stay in the state after graduation. Leadership Iowa University prepares participants to be our state’s next decision makers by highlighting the variety of personal and professional opportunities available in Iowa.

The connective program not only introduces students to a diverse and influential network, but provides the next steps to pursue passions as professionals.

“Leadership Iowa University has provided an opportunity for these students to experience all of what Iowa best offers,” said Joe Benesh of The Ingenuity Company, 2018-19 Chair of Leadership Iowa University.

Advancing our mission to cultivate Iowa’s talent continuum, our affiliates, **Elevate Advanced Manufacturing** (Elevate Iowa) and **Young Professionals of Iowa** (YP Iowa), extends our reach to additional important audiences through their respective efforts.

STAFF



Becky Coady
Vice President



Jessi (Steward) McQuerrey
Director of Programs



McKenzie Kielman
Marketing & Engagement Coordinator



Jane Galloway
Administrative Assistant



Kay Neumann-Thomas
Alumni Engagement

PROGRAMS & AFFILIATES



Business Horizons
Innovation Simulation



Leadership Iowa University
College Internship Capstone



Leadership Iowa
Professional Immersion



Elevate Iowa
K-12 Advanced Manufacturing Awareness



YP Iowa
Young Professional Networks

Business Horizons

INNOVATION SIMULATION

HIGH SCHOOL STUDENTS TEAM UP & COMPETE AS A START-UP FROM INCEPTION TO INVESTOR PITCH
USING STRENGTHS & SKILLS TO STRATEGIZE & VISUALIZE FUTURE PLANS IN IOWA

“An immersive and extremely rewarding experience.”
Connor Ferris, Missouri Valley



Business Horizons has shown me how Iowans care and support each other through business.
Ethan Geifman, Bettendorf



It challenged me in ways that made me stronger.
Abbie Den Adel, Ankeny



future ready



2019 PARTICIPANTS

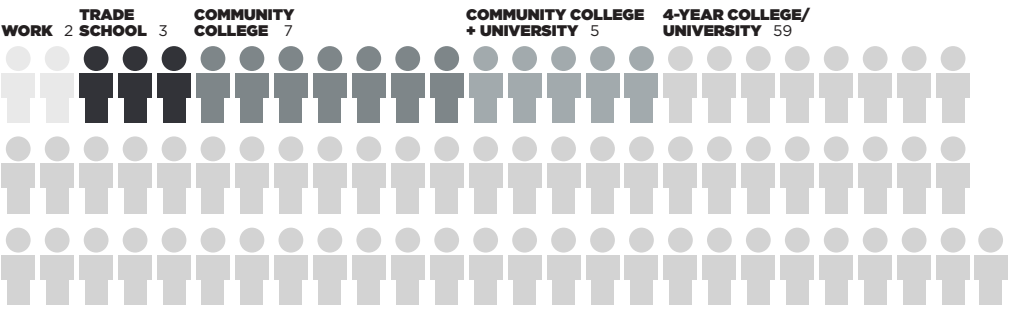
76 attendees from 47 high schools in 26 Iowa counties

16 freshmen, 17 sophomores, 31 juniors and 11 seniors

48% women, 52% men

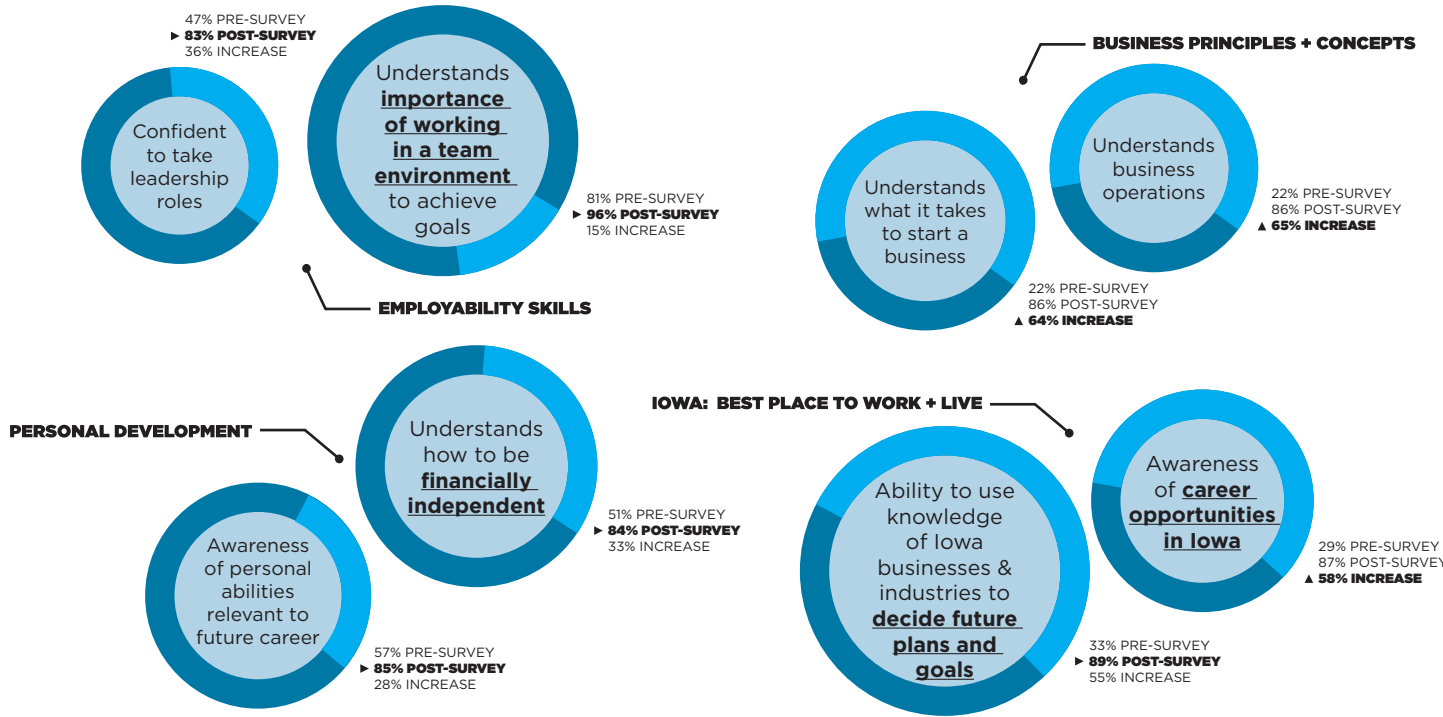
57% White, 23% Black or African American, 11% Asian or Pacific Islander, 4% Hispanic or Latinx, 5% additional ethnicities – as diverse as the population of the U.S.

Students’ plans for next steps after graduation:



PROGRAM RESULTS

Participant outcomes as conveyed through program pre- and post-survey results:



OVER 6,000 ALUMNI IN 36 YEARS OF THE PROGRAM

CLASS OF 2019 FUTURE SPONSOR
Collins Aerospace

FORTUNE 5,000 INDUSTRY TEAM
Alliant Energy, Atlantic Coca-Cola Bottling Company, DMACC, EFCO Corporation, Farm Bureau Financial Services, Grinnell Mutual, Iowa Newspaper Foundation, Newsradio 1040 + WHO (part of iHeart Media), The Wellmark Foundation, Vermeer Corporation

MANAGING PARTNER
3M, Accumold, EMC Insurance, HyVee, Musco Lighting, Nationwide Insurance, Pella Corporation, Wells Fargo

PROGRAM BOARD
Ami Burns CHAIR Vermeer Corporation
Dawn Bowlus Jacobson Institute for Youth Entrepreneurship
Jeana Clark Pella Corporation
Kaci Conetzkey Des Moines Area Community College
Sara Deich Farm Bureau Financial Services
Alex Gates Technology Consultant & Web Developer

Sid Juwarker Terracon Consultants, Inc.
Karen Rieck Farm Bureau Financial Services
Jana Shepherd Iowa Newspaper Foundation
Maddie Ladehoff Student Representative
Ashley Lupkes Student Representative
Carolyn Mueller Student Representative

Leadership Iowa University

COLLEGE INTERNSHIP CAPSTONE

CONNECTING OUR STATE'S NEXT DECISION MAKERS
WITH TOOLS FOR PROFESSIONAL & PERSONAL SUCCESS



CONNECT
with Iowa professionals at
round table discussions +
networking events

“”
*This program really
reinforced, 'If you want
to be a number, move
somewhere else. If you
want to be a leader,
stay in Iowa.*
Jules Martinez, Dordt University

*future
focused*

“”
*Leadership Iowa University
is challenging and you will
leave as a different person
for the better.*
Sheanah Wright,
University of Iowa



EXPERIENCE
life as Iowa entrepreneurs,
civic leaders and more



EXPLORE
a variety of organizations +
learn about opportunities
in Iowa



PLAN
next steps with the help of
HR professionals to show
off your strengths



2019 PARTICIPANTS

20 participants from
8 colleges + universities

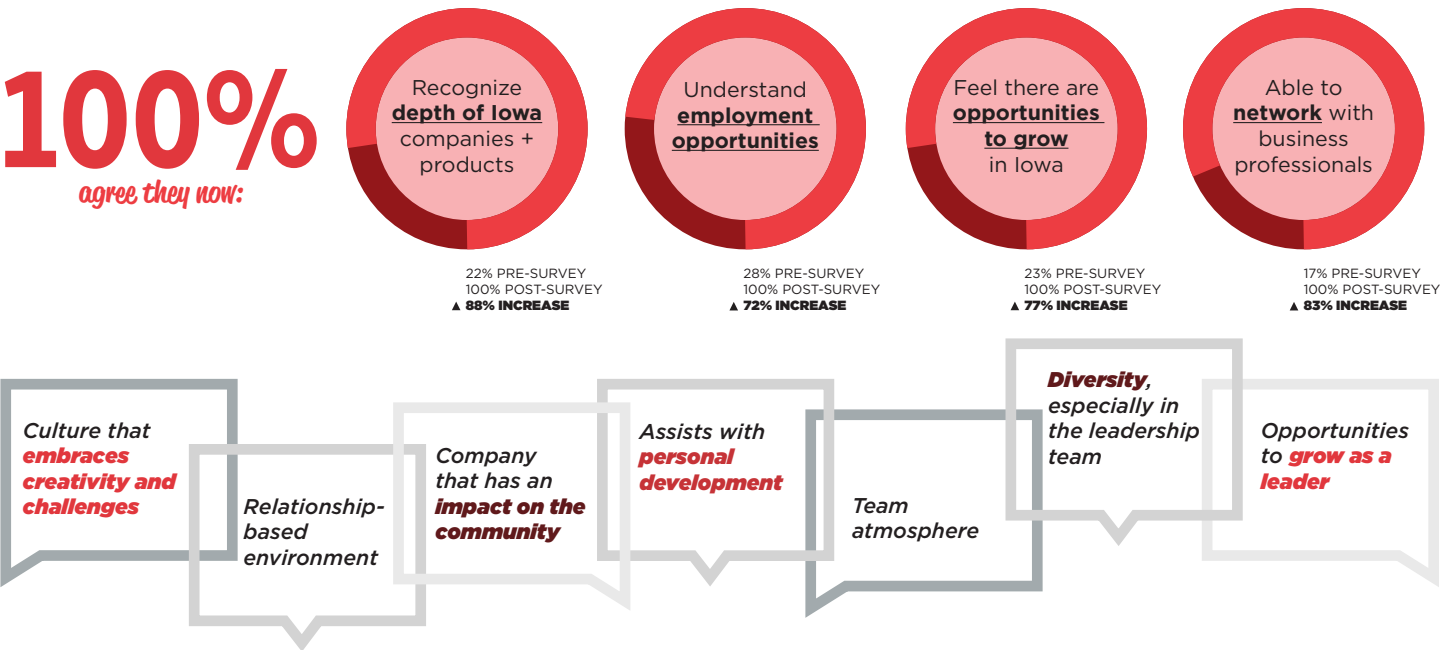
Des Moines Area Community College
Dordt University
Iowa State University
Loras College
Simpson College
University of Iowa
University of Northern Iowa
Dakota State University

45% men, 55% women

30% ethnic diversity, 70% white –
reflective of the population of Iowa

PROGRAM RESULTS

Participant outcomes as conveyed through program pre- and post-survey results:



WHEN ASKED **WHAT THEY WILL NOW LOOK FOR IN A FUTURE EMPLOYER**, THEY RESPONDED:

OVER 200 ALUMNI IN 10 YEARS OF THE PROGRAM

TRUSTEE PARTNER
Grinnell Mutual

PRESIDENTIAL PARTNER
DMACC
Farm Bureau Financial Services
Interstates
Iowa Soybean Association
Vermeer Corporation

DEAN PARTNER
Agri-Industrial Plastics
Iowa Army National Guard
Musco Lighting
Pella Corporation
The Wellmark Foundation
Wells Fargo

PROGRAM BOARD
Joe Benesh **CHAIR** The Ingenuity Company
Joe Sorenson **VICE CHAIR** Community Foundation of Greater Des Moines
Michele Waber Pella Corporation
D. Allan Boettger University of Iowa, Pomerantz Career Center
Easton Kuboushek Iowa Soybean Association
Marilyn Mueller Simpson College

Jen Nelson Navigate Wellbeing Solutions
Ryan Rohlf Keller Williams
Cindy Schaffer Grand View University
Dan Topf MDI International
Vasu Nambury Student Representative

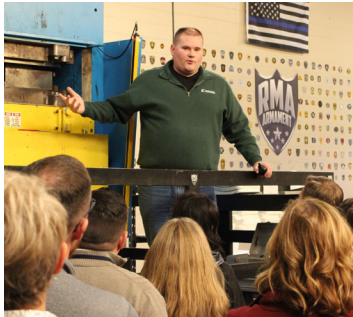
Leadership Iowa

PROFESSIONAL IMMERSION

EXAMINES THE OPPORTUNITIES & CHALLENGES FACING OUR STATE TO INSPIRE A NETWORK OF KNOWLEDGEABLE PROBLEM SOLVERS TO IMPROVE COMPANIES & COMMUNITIES



40 LEADERS
SELECTED ANNUALLY





INTEGRATED 2-DAY
MONTHLY SESSIONS





8 SESSIONS, HOSTED
ACROSS THE STATE



future
in focus



LEADERSHIP IOWA CLASS OF 2018-19

NAME	COMPANY*	HOME CITY / WORK CITY
Emily Abbas	Bankers Trust	Des Moines / Des Moines
Ajith Anand	Corteva Agriscience	West Des Moines / Johnston
Brian Aust	LBS, Inc.	Des Moines / Des Moines
Tina Bakehouse	Malvern Bank	Hastings / Malvern
Stephanie Bredman	Kirkwood Community College	Swisher / Cedar Rapids
Brett Burkhardt	Shift Interactive	Ankeny / West Des Moines
Mark Chidley	Iowa Air National Guard	Des Moines / Des Moines
Jeff Dentlinger	Farm Bureau Financial Services	Carroll / Carroll
Chad Ellsworth	Iowa Bankers Insurance and Services	Johnston / Johnston
David Farnsworth	McGowen, Hurst, Clark & Smith, PC	Polk City / West Des Moines
Chad Feenstra	Trans Ova Genetics	Sioux Center / Sioux Center
Sara Frerichs	Northwest Bank	Spirit Lake / Spencer
Jami Haberl	Iowa Healthiest State Initiative	Lohrville / Des Moines
Sarah Heggen	Central Iowa Power Cooperative	Des Moines / Des Moines
Kim Hinkhouse	Model Farm	Urbandale / Ames
Afton Holt	CornerPost Marketing	Webster City / Fort Dodge
Daniel Huitink	Vermeer Corporation	Pella / Pella
Jenae Jenison	Central College	Pella / Pella
Adriana Johnson	Collins Aerospace	Urbandale / Cedar Rapids
Dennis Jordan	Mortenson	Marion / Coralville
Jacqueline Kiple	John Deere ISG	Johnston / Urbandale
Glenda Kohout	Shive Hattery	Urbandale / West Des Moines
Katie Mason	City of Coon Rapids	Coon Rapids / Coon Rapids
Jacque Matsen	Iowa Economic Development Authority	West Des Moines / Des Moines
Ryan Peterson	RDG Planning & Design	Dubuque / Dubuque
Mark Phillips	Bank Iowa	Urbandale / West Des Moines
Adam Plagge	City of Johnston	Des Moines / Johnston
Brandon Pratt	LWBJ	Clive / West Des Moines
Matt Rebro	Russell Construction	Bettendorf / Davenport
Anthony Reynolds	CoreTegic Capital Wealth Management	Des Moines / Des Moines
Justin Schultz	Pottawattamie County	Council Bluffs / Council Bluffs
Jodi Schweiger	The Iowa Clinic	Adel / West Des Moines
Kama Small	Grinnell Mutual	Grinnell / Grinnell
Patrick Townsend	Iowa Department of Public Safety	Bettendorf / Davenport
Charity Tyler	Cedar Rapids Public Library Foundation	Cedar Rapids / Cedar Rapids
Todd Van Thomme	Nyemaster Goode, PC	Ankeny / Des Moines
Aaron Warner	ProCircular	Coralville / Coralville
Angela Weekley	Veridian Credit Union	Waterloo / Cedar Falls
Emily Westergaard	By Degrees Foundation	Des Moines / Des Moines
Andrea Woodard	Greater Des Moines Partnership	Des Moines / Des Moines

*COMPANY LISTED DENOTES PARTICIPANT'S EMPLOYER AT TIME OF PARTICIPATION IN THE PROGRAM

2018-19 SCHEDULE

OPENING SESSION, GROUP DYNAMICS & LEADERSHIP
Honey Creek Resort,
Moravia & Centerville
Oct. 10-12, 2018

AGRICULTURE & RENEWABLE ENERGY
Clarinda & Shenandoah
Nov. 1-2, 2018

BUSINESS & INDUSTRY, WORKFORCE
Oskaloosa
Dec. 6-7, 2018

GOVERNMENT
Des Moines
Jan. 16-18, 2019

PUBLIC SAFETY/SECURITY, COMMUNITY PREPAREDNESS & RESPONSE
Cedar Rapids
March 7-8, 2019

EDUCATION
Cedar Falls & Waterloo
April 4-5, 2019

ECONOMIC DEVELOPMENT & COMMUNITY VITALITY
Carroll
May 2-3, 2019

GRADUATION AT THE ANNUAL ABI "TAKING CARE OF BUSINESS" CONFERENCE
Ames
June 4-6, 2019

OVER 1,200 ALUMNI IN 37 YEARS OF THE PROGRAM

LEADING PARTNER

University of Iowa
Tippie College of Business

DIAMOND PARTNERS

Central Iowa Power Cooperative
Grinnell Mutual
Iowa Soybean Association
John Deere
Principal
Renew Rural Iowa

PLATINUM PARTNERS

Community State Bank
Davis Brown Law Firm
Pella Corporation

PROGRAM BOARD

Barb Baker CHAIR Grinnell Mutual
Jason Gross VICE CHAIR EMC Insurance
Chad Alley Breiholz Construction
Kelly Barrick CIBC Bank, USA
Chad Christensen Agri-Industrial Plastics
Brian Crotty HDH Advisors, LLC
Gina David McGowen, Hurst, Clark & Smith, PC

Alyson Fleming Iowa Finance Authority
Tresa Hussong Iowa Lakes Electric Cooperative
Adam Koppes Iowa Farm Bureau Federation
Allen Meyer State of Iowa
Brandi Mueller The Overture Group
Deb Neyens Corridor Creative Solutions
John Osako Infomatics, Inc.

Chris Proskey BrownWinick Law Firm
Annette Renaud McGough
Leighton Smith BerganKDV
Kay Snyder Iowa Area Development Group
Dave Tominsky NewBoCo
Seth Watkins Pinhook Farms

PROGRAM RESULTS

Participant outcomes as conveyed through program survey results:

“”

Every session, I got to know a classmate better, heard a speaker or learned something new about a community or business that was **immediately helpful to me in my job.**

Jacque Matsen, Des Moines

ONE LEADER AT A TIME

Through the program, I have met so many outstanding people who all truly love this state and want to **make it better for ALL Iowans** by tackling tough and important issues.

Chad Ellsworth, Johnston

Because of Leadership Iowa, I now have an even **deeper pride** in my community and my state.

Katie Mason, Coon Rapids

I anticipate looking back at the year as one of the **most impactful personal and professional learning experiences of my life.** The programming alone was worth the investment of time and resources. The relationships created with my fellow classmates are priceless.

Matt Rebro, Davenport

If not for Leadership Iowa, I would not have learned so much about our state and made such **meaningful connections** and relationships with fellow leaders.”

Dennis Jordan, Coralville

THE COURSE FOR OUR STATE

“”

IOWA'S PREMIER ISSUES-AWARENESS PROGRAM

COMMITMENT.

The program builds leaders who can address the priorities we face in Iowa. Each year we carefully select 40 leaders and engage them to learn more, dream more and become more.

What are the 'right' leadership aspirations, career accomplishments, volunteer activities and contributions to the community to be selected as a member of the next Leadership Iowa class?

It doesn't take a certain background, industry or hometown to qualify. What our participants do share is the ability and desire to lead our communities and state to a visionary future.

CONNECTIONS.

We have much to be proud of in our great state. Perhaps that's why so many outstanding Iowans answer the call to be leaders.

Each session is filled with eye-opening experiences and subject matter experts who speak on these important issues in Iowa and provide the class with insider information and advice on effecting positive change across the state.

Our participants make a tremendous commitment by participating in this program with days away from home, the office and their other responsibilities. The investment of their time is taken seriously.

CONTINUUM.

Leadership Iowa alumni tell us that their time as a member of the class is unlike anything else they have experienced. However, what's truly remarkable is what they accomplish after graduating, thanks to:

- a greatly expanded network of trusted professionals
- a better understanding of issues in both the public and private sector
- the inspiration for increased civic engagement and to seek elected positions

Ultimately, it's about the bond our graduates establish with their classmates. Lifelong friendships form that makes stronger leaders for Iowa.

ALUMNI NETWORK

Leadership for Iowa Award PRESENTED TO RICK TOLLAKSON (LI '92-93)



Rick Tollakson (LI '92-93)

Rick Tollakson has been dedicated to serving Iowa for more than 35 years. After graduating from Iowa State University, Rick immediately dove into the real estate industry. He joined Hubbell Realty Company in 1984 and was promoted to President and CEO in 2004.

Since taking on the leading role at Hubbell, Rick has been responsible for tremendous employment growth. Under his leadership, Hubbell Homes is now the largest homebuilder in the state, and Hubbell Apartment Living, established in 2007, now has 5,400 units.

In 2017, Rick was awarded the National Association of Regional Councils (NARC) John Bosley Leadership Award and the Planning Advocate Award from the Iowa Chapter of the American Planning Association. In 2018, Rick received the American Planning Association's National Planning Excellence Award for a Planning Advocate, a prestigious national award. Also in 2018, Hubbell Realty Company was awarded the 2018 Better Business Bureau Torch Award for Ethics for Rick's and Hubbell's work within the community.

Rick is a driven leader who creates opportunities for growth through the needs he sees in Iowa communities every day. He and Hubbell contribute to a variety of charitable organizations each year, from the American Heart Association and Combat Hunger to the Des Moines Arts Festival and more. In many cases, his strong belief in building the community through volunteering overlaps with his professional work.

For Rick, the most meaningful examples of his work have been the "Hubbell Extreme Builds," where Rick chooses a deserving charity, company or family to help in a time of need. It began in 2006, when Hubbell built a home for a Tama county family following a fire. It continued with Hubbell and partners constructing 9 Homes in 9 Days, rebuilding Easter Seals Camp Sunnyside's dormitories in one week, and most recently, building the new Ronald McDonald House of Central Iowa in just 11 days.

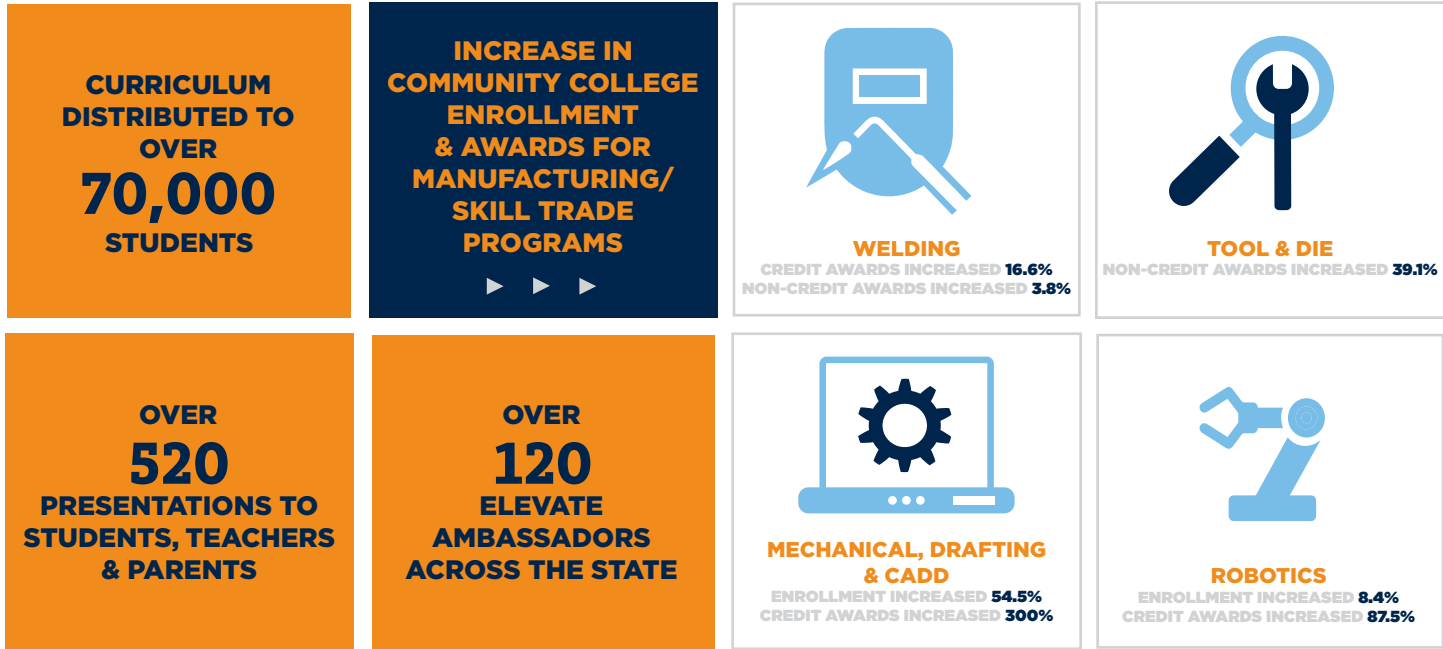
From businesses, homes, volunteer organizations, rivers, land and local events, Rick has played a role in countless projects that improve the lives of Iowans and he's far from finished.

Leadership Iowa Alumni Society 2018-19

CLASS OF 1983-84 Dick Davidson	CLASS OF 1999-00 David Collins	CLASS OF 2017-08 Dennis Ford	CLASS OF 2012-13 Katherine Barton Jason Gross Clarence Hudson Amy Mohr James Nalley Kay Snyder Tony Timm	CLASS OF 2016-17 Jen Bleil Matt Converse Adam Kaduce Jenelle Krieling Wolber Ryan Marti Anshu Pasricha Chris Proskey Travis Sheets Leighton Smith
CLASS OF 1984-85 Rand Fisher	CLASS OF 2000-01 Kathy Anderson Mike Espeset Mary Lawler	CLASS OF 2008-09 Scott Carpenter Marybeth Foster John Gilliland Robert Peterson	CLASS OF 2013-14 Kim Butler Hegedus Ben Champ Tresa Hussong Deb Lucht Tony Niedert	CLASS OF 2017-18 Allan Boettger Ryan Boyington Sandra Byers Michelle Cassabaum Kavilash Chawla Becky Coady Matthew Cole Rich Dwyer Matt Fett Alyson Fleming Lisa Houser Tom Johnson Janelle Kracht Maureen Lockwood Jeff Magner Julie Mulford John Myers Jennifer Nelson Amy Price Scott Seeliger Travis Simpson David Tominsky Molly Varanghounh Norma Wolfe Tyler Wyngarden
CLASS OF 1985-86 Steven Noah	CLASS OF 2001-02 Bruce Nuzum Robert Riley	CLASS OF 2009-10 Christy Jaworski Kathy Joblinske Jay Moline Adam Obrecht	CLASS OF 2014-15 Ashley Aust Susan Clark Gina David Ann Hudson Allen Meyer Brandi Mueller Memorea Schrader	
CLASS OF 1987-88 David Vaudt	CLASS OF 2002-03 Dan Culhane Leisa Fox Todd McDonald Karen Novak Swalwell	CLASS OF 2010-11 Bob Andeweg Cheri Monahan Deb Neyens Joe Pietruszynski Meg Schneider Seth Watkins	CLASS OF 2015-16 Kelly Barrick Brian Crotty Jay Ferris Adam Koppes John Osako Melissa Reade	
CLASS OF 1988-89 Myron Linn	CLASS OF 2003-04 Terry Schumaker Amanda Zwanziger	CLASS OF 2011-12 Barb Baker Heath Bullock Chad Christensen Stephen Fry Jill Greiner Shelly Herr Drew Larson David Moench Karen Rieck Todd Sommerfeld Alex Taylor Dan Topf Martin Wesemann Neal Westin		
CLASS OF 1990-91 Mark Clark Wes Ehrecke Alexa Heffernan Mike Ralston Rebecca Stadlman	CLASS OF 2004-05 Tamara Kenworthy Mike Meissen Annette Renaud Steve Schmidt John Schreurs Scott Sylvester			
CLASS OF 1992-93 Rick Tollakson	CLASS OF 2005-06 Chad Alley Drew Conrad			
CLASS OF 1995-96 David Huser	CLASS OF 2006-07 Jason Kirke			
CLASS OF 1997-98 Mary Foley Balvanz Mark Snell				
CLASS OF 1998-99 Bruce Hansen Billi Hunt Susan Judkins Tom McMahon				

Elevate Iowa

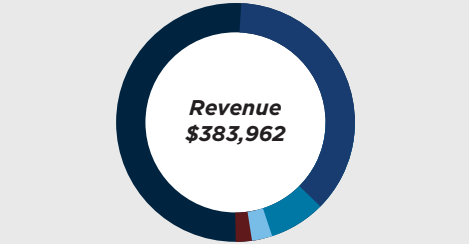
K-12 ADVANCED MANUFACTURING AWARENESS



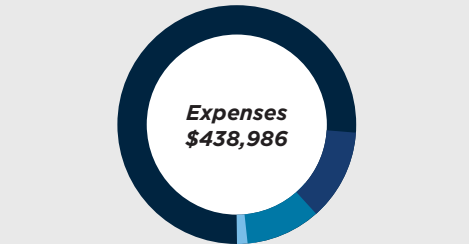
ABI Foundation Financial Report

The ABI Foundation programs would not be possible without the countless hours and resources donated each year. We are proud to have again provided financial aid (program scholarships) to 100% of participants who requested assistance to attend our programs this year, guaranteeing that personal and professional development is never out of reach.

The ABI Foundation Endowment fund grew by more than \$87,000, helping to ensure these programs continue on into perpetuity. We look forward to strengthening and expanding upon our partnerships across the state in the coming year as we continue providing high-impact programming accessible to all Iowans seeking to engage and improve our state.



■ Sponsorships/Grants	—————	\$205,854
■ Participant Fees	—————	\$122,836
■ Gifts & Donations	—————	\$30,370
■ Membership Dues	—————	\$12,700
■ Special Events	—————	\$12,202



■ Programs	—————	\$336,766
■ Communication/Marketing	—————	\$54,327
■ Fundraising	—————	\$40,752
■ Critical Infrastructure	—————	\$7,141



■ Business Horizons	—————	\$13,325
■ Leadership Iowa University	—————	\$7,000
■ Leadership Iowa	—————	\$9,950

The ABI in ABI Foundation A MESSAGE FROM MIKE RALSTON



Mike Ralston
ABI President

The Iowa Association of Business and Industry (ABI) began over a century ago with the vision to advance Iowa businesses, and through the economic uplift of those businesses, advance the state itself. In addition to advocate, collaborate and educate, it was the creation of the ABI Foundation nearly 40 years ago that fulfills the last of our mission: to motivate.

Over 7,000 business and civic leaders from across the state have completed ABI Foundation programs, and it is all Iowans—not just ABI members—who benefit. Young people can envision a successful future in our state. Women and men have been inspired to run for office and take on active leadership roles to help affect positive change. Communities and organizations have found resources to help them grow.

ABI is proud of the ABI Foundation for the numerous ways it makes a difference in the lives of Iowans. It is thanks to your support, and the support of countless others, that the ABI Foundation continues to serve our state. We appreciate your essential role in making this possible.

Impact on Business A MESSAGE FROM KIM BUTLER HEGEDUS



Kim Butler Hegedus
ABI Foundation Incoming Chair

Unique to Iowa is the united, inclusive and altruistic vision of our state's leaders for all to rise together - rural, suburban and urban, in all expertise, organizations and industries. It is the commitment each company and community has to take these challenges as inspiration to innovate that makes connecting inter-generational leadership and other catalysts for growth more beneficial.

When it comes to cultivating and retaining workforce, these exceptional programs execute exactly what our emerging and established leaders need to succeed. Every experience relates to what participants can now bring forward to their organization and others they serve.

The meaningful work of the ABI Foundation adds tremendous value to Iowa business and industry. Thank you for your support in recognizing individuals within our state to foster continued success for all.

ABI Foundation Donors

\$14,000-24,999
Grinnell Mutual and the
Grinnell Mutual Foundation
Collins Areospace

\$10,000-13,999
DMACC
Farm Bureau Financial Services
Iowa Soybean Association
Pella Corporation
Tom & Clarisa McMahon

\$5,000-9,999
Alliant Energy Foundation
Atlantic Coca-Cola Bottling Company
CIPCO
EFCO Corporation
Interstates
John Deere
Musco Lighting
Renew Rural Iowa
University of Iowa
Tippie School Of Business
Vermeer Corporation and the
Vermeer Foundation
Walt Smith
Wellmark Foundation
Wells Fargo Foundation

\$2,500-4,999
3M Foundation
Accu-Mold
Agri-Industrial Plastics
Bank Iowa
Community State Bank
Davis Brown
EMC Insurance
Hy-Vee
Iowa Army National Guard
Iowa Newspaper Foundation
Nationwide Insurance
Principal Financial Group
United Equipment Accessories, Inc.

\$1,000-2,499
Casey's General Store
City of Cedar Rapids
Conlon Corporation
Iowa Corn Growers Association
Iowa Farm Bureau Federation
Iowa Gaming Association

Jason Gross
Lisle Foundation
Mechdyne Corp.
Veridian
Voorhees Family Foundation

\$500-999
Appanoose Economic Development Corporation
BerganKDV
Carroll Area Development Corporation
Cedar Rapids Bank & Trust
Clow Valve Corporation
Emerge Marketing Solutions
First National Bank
Greater Des Moines Partnership
Gilliland Group at Morgan Stanley
Hawkeye Community College
Hy-Capacity
Informatics, Inc.
Johnson & Greiner Financial Consulting Group
Kay Snyder
Kreg Tool
Leadership Iowa,
Class of 2015-16
Class of 2018-19
Mary Lawyer
Mike Ralston
Northwest Bank
Nyemaster Goode, P.C.
Roosevelt Foundation
Simpson College
State Farm Insurance
Terracon Consultants, Inc.
The Overture Group
TrueNorth
Wright Service Corp.

\$1-499
Al Hageman, Salon U
Alex Taylor
Ann Block
ATW Training Solutions
Badding Construction
Barb Baker
Batón Global
Becky Coady
Bob Wersen
Catch Des Moines
Chad Alley

Chris Proskey
Clarinda Community School
Commercial Savings Bank
Computer Concepts
Corridor Business Journal
CR-B Education Foundation
CUNA Mutual
D. Allan Boettger
Dan Topf
Deere & Co, Benevity Comm. Impact Fund
DEKKO Foundation
Easton Kuboushek
Hancock County Economic Development
Heath Bullock
Hiram Houghton, LaunchIT
Indian Creek Nature Center
Interpower Corporation
Interstate Power & Light, Co.
Iowa Cattleman's Association
Jackson Manufacturing
Jeff Dentlinger
Jill Greiner
Jessi (Steward) McQuerrey
Joe Sorenson
John Schreurs
Joseph Jones
Juergens Chiropractic & Acupuncture
with Sampson Farms
Kerrie Liedtke
Kelly Mitchell
Kim Butler Hegedus
Kirk McCollough
Laurel Nnabuo-Owowoh
Leighton Smith
Marilyn Mueller
Midland Credit Union
Nancy Weaton
Opportunity2
Palmer Group
Preston Times
RMA Armament
Sally Worley
Serve Credit Union
The Ingenuity Company
Thombert
Todd Sommerfeld
Tresa Hussong
Wade Den Hartog
Windstar Lines, Inc.

IT IS THE COMMITMENT OF EACH IOWA COMPANY & COMMUNITY TO TAKE THEIR CHALLENGES AS INSPIRATION TO INNOVATE

BE INVOLVED

FOUNDATION BOARD

Bill Brown **CHAIR** BrownWinick Law Firm
Kim Butler Hegedus **VICE CHAIR** Community State Bank
Mike Ralston **SECRETARY/TREASURER** ABI
Ami Burns **BH CHAIR** Vermeer Corporation
Joe Benesh **LIU CHAIR + YP IOWA CHAIR** The Ingenuity Company
Barb Baker **LI CHAIR** Grinnell Mutual
Jason Gross **LI VICE CHAIR** EMC Insurance

Linda Crookham-Hansen Musco Sports Lighting, LLC
Wes Ehrecke Iowa Gaming Association
Rand Fisher Iowa Area Development Group
Wayne Pantini Union County Development Association
Tom McMahon Retired
Shari Naughton Cetera Financial Group
Ann Thelen Thelen Public Relations

NOMINATE
Spread the word.

Complete online nominations for students or adults to take part in any of our programs.

VOLUNTEER
Share your perspective.

Meet our participants and see the impact first-hand by joining the hundreds of volunteers it takes to make these programs a success.

DONATE
Sponsor success.

Build your legacy by supporting Iowans. Show your company's support across the state through a tax-deductible contribution to the ABI Foundation or the programs.

www.iowaABIFoundation.org



LEADERSHIP **IOWA**
UNIVERSITY



ELEVATE
ADVANCED MANUFACTURING

